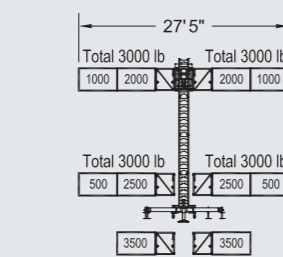
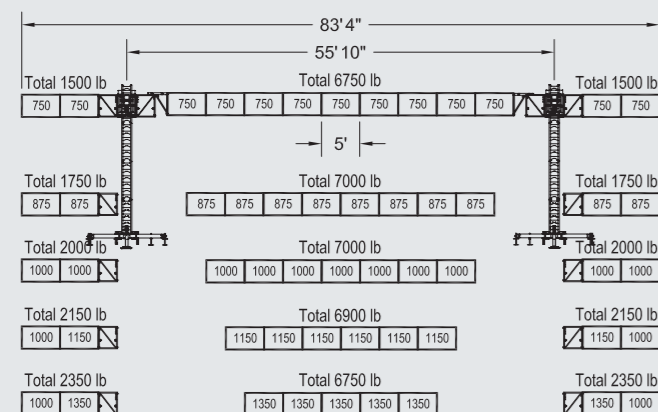


Platform dimension (transport)	42" x 76" x 76" (W x L x H) (1,1 m x 1,9 m x 1,9 m) (fully assembled)
Min./Max. platform length single mast	7'5" / 27'5" (2,3 m / 8,4 m)
Min./Max. platform length twin mast	63'4" / 83'4" (19,3 m / 25,4 m)
Maximum load capacity single mast (excluding persons and equipment)	7 500 lb at 7'5" (3 402 kg at 2,3 m) 6 000 lb at 27'5" (2 722 kg at 8,4 m)
Maximum load capacity twin mast (excluding persons and equipment)	11 450 lb at 63'4" (5 194 kg at 19,3 m) 9 750 lb at 83'4" (4 423 kg at 25,4 m)
Maximum height	Up to 250' (76 m) without prior authorization from Hydro Mobile
Tie distance	Up to 20' (6,1 m)
Free-standing	20' (6,1 m) with base outriggers extended at a 30° angle
Climbing speed	Up to 7' (2,1 m) per minute
Drive system	Hydraulic Ratchet Drive
Operating system	3,5" (8,9 cm) hydraulic cylinders @ 2 800 psi (19 305 kPa)
Engine type	9 HP gasoline engine • with electrical starter
Safety device - Emergency descent	Electrical independent control descent
Total platform weight	2 550 lb (1 157 kg) (fully assembled)
Mast section	16" x 16" x 60" (40,6 cm x 40,6 cm x 1,5 m) • 235 lb (107 kg) per section
Base dimension + weight	36" x 67" x 72" (91 cm x 170 cm x 183 cm) • 1 130 lb (513 kg)

	Dimensions	Weight
60" bridge	61" x 62" x 36" (155 cm x 157 cm x 91 cm)	390 lb (177 kg)
60" bridge extension	30" x 60" x 5" (76 cm x 152 cm x 13 cm)	124 lb (56 kg)
30" bridge	31" x 62" x 36" (79 cm x 157 cm x 91 cm)	280 lb (127 kg)
30" bridge extension	30" x 30" x 5" (76 cm x 76 cm x 13 cm)	96 lb (44 kg)
Bearing bridge	32" x 62" x 36" (81 cm x 157 cm x 91 cm)	220 lb (100 kg)
Access bridge	62" x 60" x 50 1/4" (157 cm x 152 cm x 127 cm)	750 lb (340 kg)



Lengths	
5'	1,52 m
27'5"	8,36 m
55'10"	17,03 m
83'4"	25,40 m

Weights		Weights		Weights	
500 lb	227 kg	1 500 lb	680 kg	3 000 lb	1 361 kg
750 lb	340 kg	1 750 lb	794 kg	3 500 lb	1 588 kg
875 lb	397 kg	2 000 lb	907 kg	6 750 lb	3 062 kg
1 000 lb	454 kg	2 150 lb	975 kg	6 900 lb	3 130 kg
1 150 lb	522 kg	2 350 lb	1 066 kg	7 000 lb	3 176 kg
1 350 lb	612 kg	2 500 lb	1 134 kg		

The information contained in this document is for illustrative purposes only. Please refer to the note in the "General Information" section of the owner's manual for prevalence of information.

ELEVATING EFFICIENCY

High on safety

Hydro Mobile is committed to designing and manufacturing products that contribute to creating hazard-free work environments. It is the policy of the company to offer quality products that contribute to increased worker safety, security and longevity.



Productivity

Safety systems are built into all Hydro Mobile platforms. This reduces the number of work-related injuries and loss of man-hours. Taken together, these factors mean contractors can feel much more confident about their ability to meet deadlines.

can always be placed at a comfortable height for workers. This lessens the need for bending and lifting relatively heavy weights, which significantly reduces long term wear-and-tear.

Training

Our emphasis on training is one of the key factors in increasing our clients' efficiency. We even have the Hydro Mobile University where our clients can come and get accustomed to using the platforms they have purchased even before the platforms have been delivered. And our after-sales service is unrivalled.

"Safety and productivity are major concerns in the construction industry. A Hydro Mobile platform is set up once from the ground. From there, workers are safe all the way up. Furthermore, workers are positioned at a comfortable level, making it easier to lift materials, there by reducing physical effort. Better ergonomics translates into increased productivity. And Hydro Mobile work platforms have greatly simplified my life regarding OSHA inspections."

— Patrick W. Murphy
Sucato Builders, NY

P

SERIES

For more information on the P-Series or to locate your nearest distributor, call us now at:
1-888-484-9376
or visit our Web site
www.hydro-mobile.com



125, de l'Industrie L'Assomption, Québec Canada J5W 2T9
Phone: 450.589.8100
Toll free: 1.888.484.9376
Fax: 450.589.0370
hydro@hydro-mobile.com

Distributor:

Safety

Hydro Mobile's platforms are so safe that workers don't even need to be tied with a lifeline on the work area.

Ergonomy

Skilled replacements are becoming increasingly hard to find. Given the design characteristics of the platforms, materials



SERIES



ELEVATING EFFICIENCY

P SERIES

THE HIGH-POWERED mini work platform

The **P-series** is the perfect tool for smaller jobs that require high capacity or for restrained work area where most platforms can't fit, whether for new construction or restoration. With its high load capacity: 6 000 lb (2 722 kg) at 27'5" (8,4 m) length to size ratio, it is ideal for multi-residential or small commercial masonry jobs between 15' (4,5 m) and 100' (30,5 m) in height.

The P-series offers an attractive price/performance ratio. It is extremely portable and set up is both easy and very quick. In addition, it is adaptable to angle configurations and boasts a 7 feet (2,1 m) per minute climbing rate. By reducing labor costs and set-up time, the P-Series can contribute to an estimated 30% increase in productivity.

ELEVATING EFFICIENCY

Hydro Mobile designs and manufactures mast-climbing work platforms that integrate innovative structural, mechanical, ergonomic and safety features to increase productivity, facilitate project completion, reduce worker fatigue and considerably decrease the risk of injuries.

Hydro Mobile is also dedicated to providing training, client support and technical expertise to raise end-users proficiency with its products and help elevate efficiency at the work site.

P-SERIES

- High capacity-to-size ratio
- Allows single- and twin-mast configurations, which most smaller platforms can't accommodate
- Quick assembly can be carried out by only two people
- Highly portable
- Easy and minimal maintenance

"We really appreciate the versatility of the P-Series work platform. First, the multiple possible configurations of the unit permit easy access, for example, to inside or outside corners of buildings and it is also adaptable to other shapes. Second, it is very portable and easy to take to job sites. In the end, the product being well made, it brings us the dependability, stability and security we're looking for."

- Curtis M. Thomas
Project Manager
Metropolitan Glass, Inc.



83'4" (25,4 m) twin-mast set-up

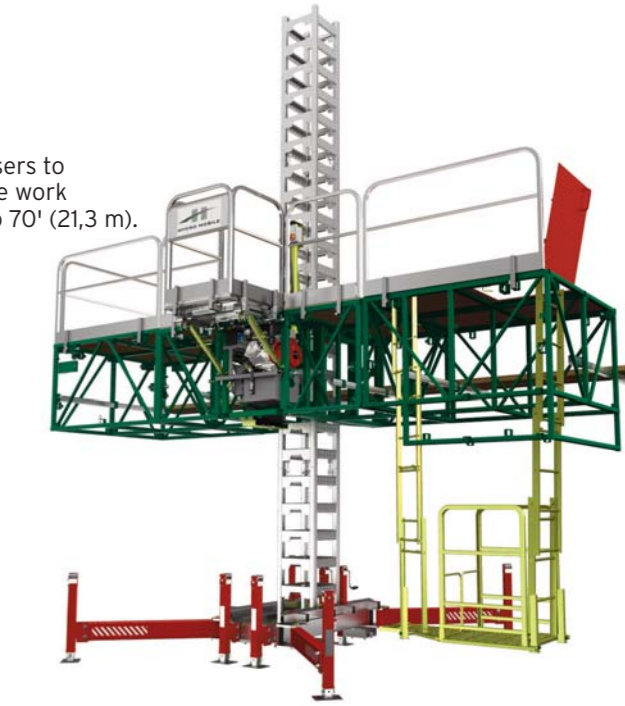


Bearing bridge adaptor

This accessory permits the installation of a twin mast set-up, which can raise the load bearing capacity to 9 750 lb (4 423 kg) at the maximum 83'4" (25,4 m) set-up length.

Access bridge

The access bridge allows users to easily make their way to the work platform at heights of up to 70' (21,3 m).



Single-mast set-up

The single mast set-up has a load bearing capacity of 6 000 lb (2 722 kg) at the maximum 27'5" (8,4 m) set-up length, very high for a platform of this size.



60" bridge



120" bridge

Extensions

The P-Series includes accessories like platform extensions that can increase work space up to 7' (2,1 m) in width.



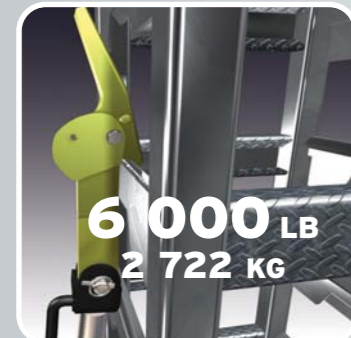
HIGH SPEED

Fast two-person hand assembly of platform up to 28' (8,5 m) wide.



HIGH-TECH

6 000 lb (2 722 kg) load capacity provided by innovative hydraulic system.



HIGH ON SAFETY

Expandable up to a 7' (2,1 m) wide work area, reducing risk of injury.



HIGH EFFICIENCY

Platform can fit in a 36" (91 cm) opening.

