



HYDRO MOBILE

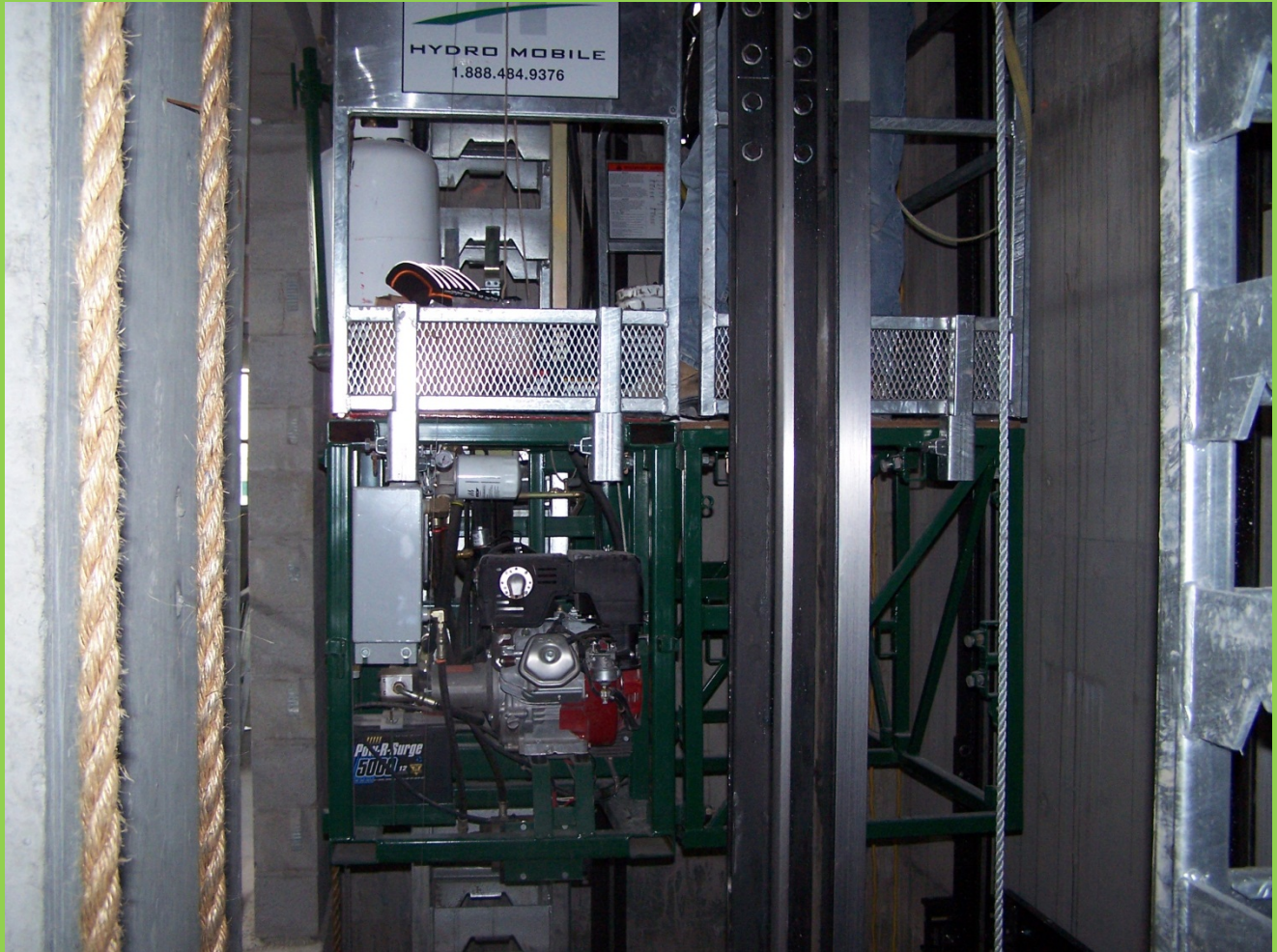
ELEVATING
EFFICIENCY

P-Series in Elevator shaft (Schindler Elevators)











Mast climbers used in elevator shafts

The P-Series, with its compact motor unit and its high capacity, has always been considered as a competitive alternative to frame scaffolding and swing stage for construction, renovation and demolition works performed in restrained areas like elevator shafts.

Du-For Scaffolding has been among the early promoters of the P-Series for this type of application and has recently developed a special 20"-wide bridge, with brackets for outriggers on three sides, that allows the P-Series to adapt to all standard elevator shafts (usually: 10'-8" or 8'-4" x 5'-9").

This custom solution considerably reduces the completion time and the risk of injuries. The machine is installed in a few hours, all tools are always at hand, and scaffolding planks do not need to be moved up and down anymore, which usually causes back injuries and dangerous falling hazards.

One of Du-For's main customers in that sector is the Pennsylvaniaian manufacture of Schindler Elevator Corporation, the North American operating entity of the Swiss-based Schindler Group, the world's second largest elevator company. Schindler has been a customer of Sylvain Cloutier, from Du-For, for the past two years and the company has even started to use P-Series in other regions. Overall, this market represents an important potential for Hydro Mobile with thousands of elevators built and installed each year in North America.

Hydro Mobile is a privately owned corporation. The company is mainly involved in the design, manufacturing and distribution of mast climbing work platforms for the construction industry. Hydro Mobile platforms are distributed throughout North America and Europe through a wide network of distributors that are recognized as key players in construction equipment sales and rental. With over 6,000 platforms on the market, Hydro Mobile is unquestionably the leader of the industry.

SPECIFICATIONS	P-SERIES
Max. Capacity	8,400 lb. (L: 3'-3") 6,000 lb. (L: 28')
Max. Capacity with two units	11,450 lb. (L: 52') 9,750 lb. (L: 84')
Climbing Speed	10 fpm
Min. size	Can fit through a 36" opening
Max. length with one unit	28'
Max. length with two units	84'
Max Height * without prior authorization	250' *
Tie Distance	20'

FOR ADDITIONAL INFORMATION, CONTACT:

Thierry Lachapelle

Marketing Director
Hydro Mobile Inc.
Tel : (450) 589-8100
1-888-484-9376

Or visit our website www.hydro-mobile.com