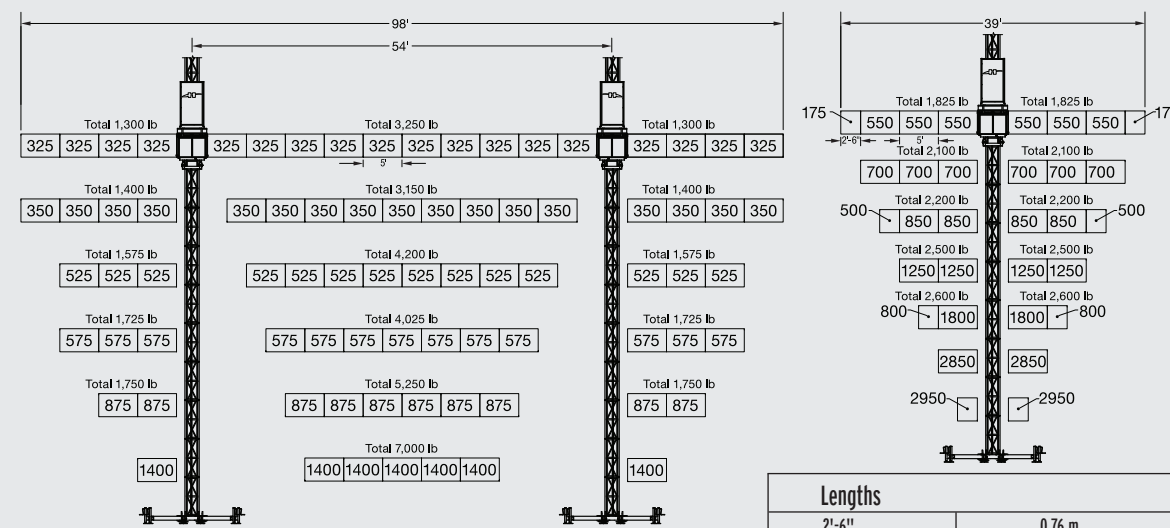


Platform dimension (transport)	W x L x H: 50" x 78" x 87" (1,3 m x 2,0 m x 2,2 m)
Min./Max. platform length single mast	9' / 39' (3 m / 12 m)
Min./Max. platform length twin mast	43' / 98' (13 m / 30 m)
Platform width	5' (1,5 m)
Capacity single mast (Load + Men)	4 200 lb. at 34' (1 900 kg at 10 m) 5 700 lb. at 14' (2 600 kg at 4 m)
Capacity twin mast (Load + Men)	5 850 lb. at 98' (2 650 kg at 30 m) 9 800 lb. at 43' (4 450 kg at 13 m)
Maximum height	Up to 250' (76 m) without prior authorization from Hydro Mobile
Tie distance	30' (9 m)
Free-standing	30' (9 m) with base outriggers extended at a 30° angle
Climbing speed	21' (6,5 m) per minute
Drive system	Rack and pinion
Safety device	Emergency descent Overspeed break
Total platform weight (without base)	1 850 lb. (845 kg)
Mast section	24 1/4" x 22" x 60" (61 cm x 56 cm x 152 cm) - 205 lb. (93 kg) per section
Base dimension - weight	50" x 78" x 25" (1,3 m x 2 m x 0,63 m) - 950 lb. (430 kg)

Power system	1x 7.5 HP (single mast) / 2x 7.5 HP (twin mast)
Power consumption	25 A
Input power	America: 230 V / 3 ph / 60 Hz Europe: 400 V / 3 ph / 50 Hz
Control voltage	24 VDC
Starting current	up to 120 A
Outlet for hand tools	America: 120 V, 20 A - 1 ph Europe: 220 V, 15 A - 1 ph
Cable	1x 10/4



Weights		Weights		Weights	
175 lb.	80 kg	1 250 lb.	567 kg	2 600 lb.	1 180 kg
325 lb.	148 kg	1 300 lb.	590 kg	2 850 lb.	1 293 kg
350 lb.	159 kg	1 400 lb.	635 kg	2 950 lb.	1 339 kg
500 lb.	227 kg	1 575 lb.	714 kg	3 150 lb.	1 429 kg
525 lb.	239 kg	1 725 lb.	783 kg	3 250 lb.	1 475 kg
550 lb.	250 kg	1 750 lb.	794 kg	4 025 lb.	1 826 kg
575 lb.	261 kg	1 800 lb.	817 kg	4 200 lb.	1 906 kg
700 lb.	318 kg	1 825 lb.	828 kg	5 250 lb.	2 382 kg
800 lb.	363 kg	2 100 lb.	953 kg	7 000 lb.	3 176 kg
850 lb.	386 kg	2 200 lb.	998 kg		
875 lb.	397 kg	2 500 lb.	1 134 kg		

## ELEVATING EFFICIENCY

### High on safety

Hydro Mobile is committed to designing and manufacturing products that contribute to creating hazard-free work environments. It is the policy of the company to offer quality products that contribute to increased worker safety, security and longevity.



For more information on the E-Series or to locate your nearest distributor, call us now at:

**1-888-484-9376**

or visit our Web site  
[www.hydro-mobile.com](http://www.hydro-mobile.com)



ELEVATING EFFICIENCY

125, de l'Industrie  
L'Assomption, Québec  
Canada J5W 2T9  
Phone: 450.589.8100  
Toll free: 1.888.484.9376  
Fax: 450.589.0370  
[hydro@hydro-mobile.com](mailto:hydro@hydro-mobile.com)

Distributor:

### Productivity

Safety systems are built into all Hydro Mobile platforms. This reduces the number of work-related injuries and loss of man-hours. Taken together, these factors mean contractors can feel much more confident about their ability to meet deadlines.

### Safety

Hydro Mobile's platforms are so safe that workers don't even need to be tied with a lifeline on the work area.

### Ergonomy

Skilled replacements are becoming increasingly hard to find. Given the design characteristics of the platforms, materials

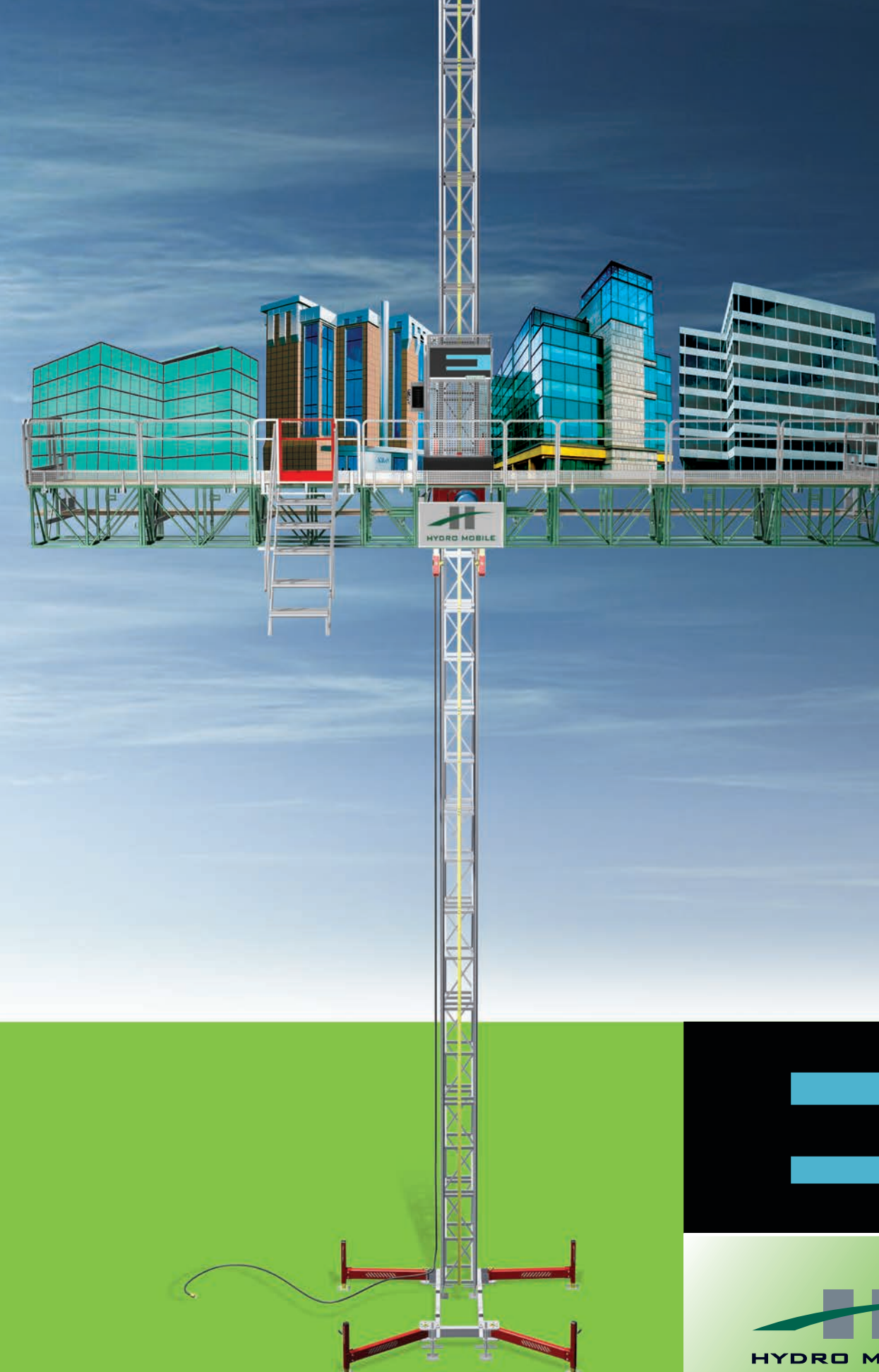
can always be placed at a comfortable height for workers. This lessens the need for bending and lifting relatively heavy weights, which significantly reduces long term wear-and-tear.

### Training

Our emphasis on training is one of the key factors in increasing our clients' efficiency. We even have a "mini-university" where our clients can come and get accustomed to using the platforms they have purchased even before the platforms have been delivered. And our after-sales service is unrivalled.

"Safety and productivity are major concerns in the construction industry. A Hydro Mobile platform is set up once from the ground. From there, workers are safe all the way up. Furthermore, workers are positioned at a comfortable level, making it easier to lift materials, thereby reducing physical effort. Better ergonomics translates into increased productivity. And Hydro Mobile work platforms have greatly simplified my life regarding OSHA inspections."

— Patrick W. Murphy  
Sucato Builders, NY



SERIES



ELEVATING EFFICIENCY

# THE HIGH-ACCESS work platform

SERIES

The **E-series** combines low ownership and rental costs with versatility, reliability, and safety. This is the ideal access solution for a wide variety of trades: glazing, EIFS, painting, roofing, caulking, restoration, inspection, cleaning, maintenance, and more. Compact and highly adaptable, the E-Series offers forward and back extensions, and swivel bridges to achieve an infinite number of configurations that accommodate various facades.

All-electric, the E-Series climbs continuously at 21 feet (6.4 m) per minute, with a simple push of a button, up to 250 feet (76.2 m) high. In single-mast configuration, it has a top capacity of 5 800 lb. (2 631 kg) and a maximum length of 39 feet (11.9 m). With no special bridges required, a twin-mast configuration can reach a length of 98 feet (29.8 m). All this adds up to an estimated 30% increase in productivity.

## ELEVATING EFFICIENCY

Hydro Mobile designs and manufactures mast-climbing work platforms that integrate innovative structural, mechanical, ergonomic and safety features to increase productivity, facilitate project completion, reduce worker fatigue and considerably decrease the risk of injuries.

Hydro Mobile is also dedicated to providing training, client support and technical expertise to raise end-users proficiency with its products and help elevate efficiency at the work site.

The E series is an excellent mast climber. We rented two units for a complete face lift on a 25 story tower. We were so impressed with the equipment, we purchased two of our own.

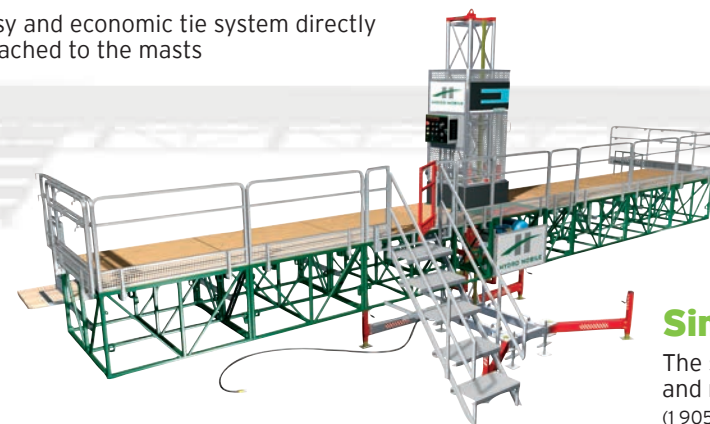
- Gilles Godard  
President  
Lor-Issa Construction Inc



98' (29.87 m) twin-mast set-up

## E-SERIES

- Ease of operation
- Allows single- and twin-mast configurations without any adaptor
- Super-fast, two-person assembly
- Adapts to various building shapes
- Minimal, simple maintenance
- Modular core system accommodating restrained areas
- Easy and economic tie system directly attached to the masts



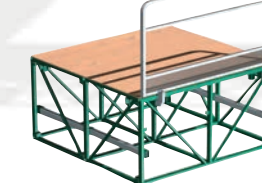
## Single-mast set-up

The single-mast set-up has a load and men bearing capacity of 4,200 lb. (1 905 kg) at 34' (10.4 m) set-up length, extremely rugged for this product category.

30" bridge

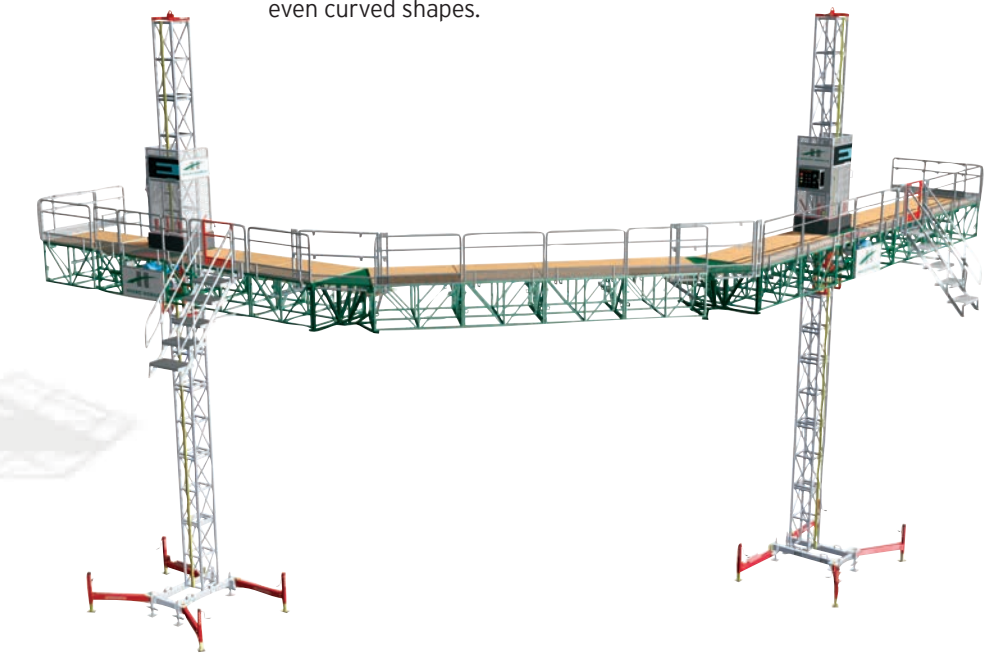


60" bridge



## Swivel bridge

The swivel bridge accessory gives the E-Series the added flexibility to accommodate angles and almost any building configuration, even curved shapes.



## Extensions

The E-Series includes accessories like platform extensions that can increase work space up to 7' (2.1 m) in width.



## HIGH SPEED

Fast two-person hand assembly of platform up to **39' (11.9 m) wide**.



## HIGH-TECH

New Power train allows twin-mast set-up without any adaptor.



## HIGH ON SAFETY

Expandable up to a **7' (2.1 m) wide** work area, reducing risk of injury.



## HIGH SIMPLICITY

Easy to use ascend/descend buttons.



## Mobile chassis

The mobile chassis allows quick relocation and set-up of platforms on the work site. It also provides considerable support: platforms on the chassis can safely be built up to increased freestanding heights.

	Dimensions	Weight
60" bridge	60" x 62" x 36" (152 cm x 157 cm x 91 cm)	380 lb. (172 kg)
60" bridge extension	30" x 60" x 5" (76 cm x 152 cm x 13 cm)	50 lb. (23 kg)
30" bridge	30" x 62" x 36" (76 cm x 157 cm x 91 cm)	280 lb. (86 kg)
30" bridge extension	30" x 30" x 5" (76 cm x 76 cm x 13 cm)	28 lb. (13 kg)