



HYDRO MOBILE

ELEVATING
EFFICIENCY

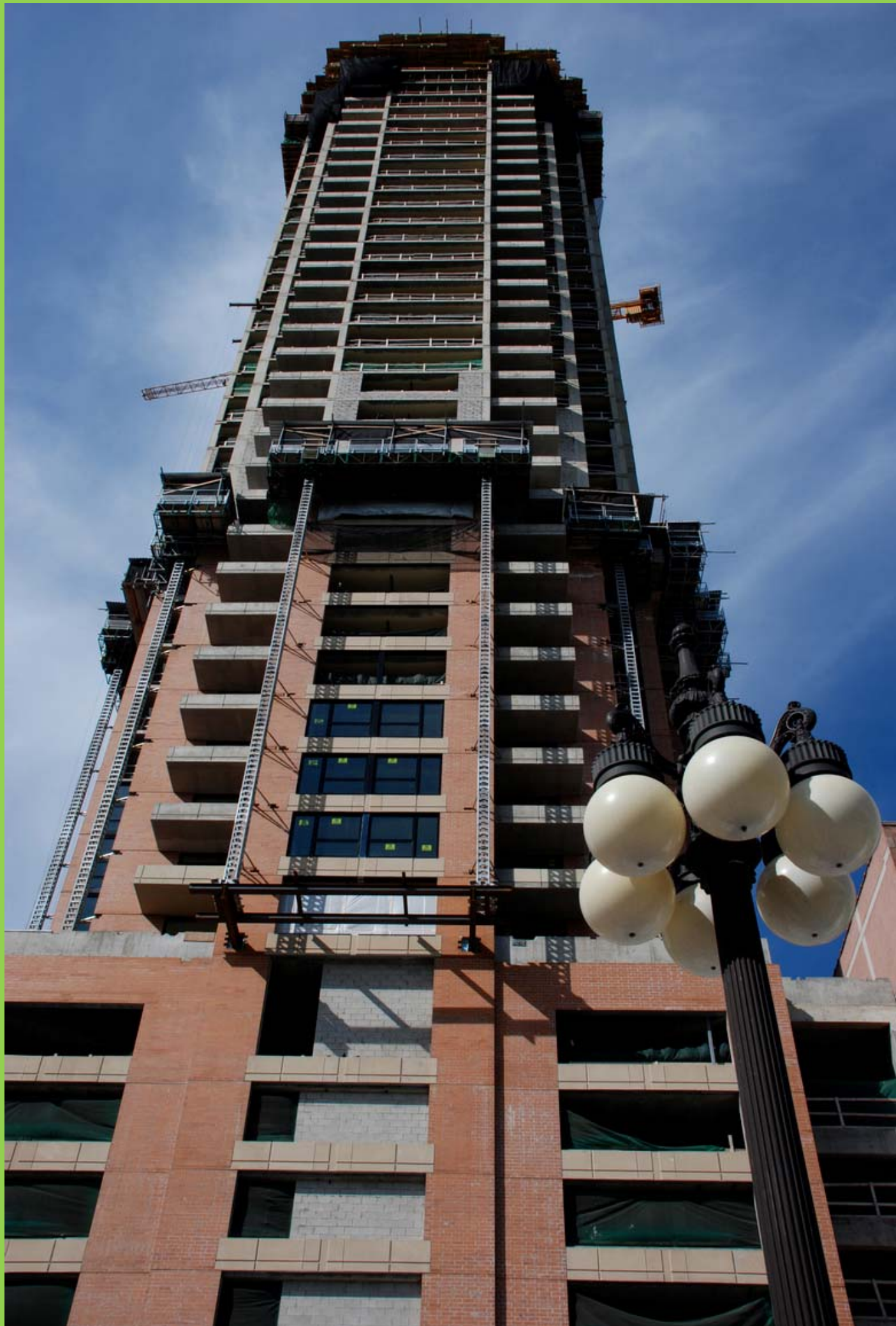
*The Columbian
Chicago, IL, USA*















**For immediate
release...**

www.hydro-mobile.com
1-888-484-9376

L'Assomption; February 14, 2007

SKY IS THE LIMIT

20 P-series mast climbing work platforms from Hydro Mobile are used for the challenging construction of a masonry skyscraper in downtown Chicago.

In Chicago, the construction of The Columbian at 1160 South Michigan Avenue, the tallest handset masonry building in town, with 49 stories, does not go unnoticed. In fact, with 20 Hydro Mobile P-series platforms in use, the 507 foot tall project moves forward at the impressive pace of one 10,500 square feet of concrete floor every two days; something that would be impossible with traditional scaffolds.

This project even drew the attention of National Geographic Channel in the United States and was featured in their show "Science of Brick".

Hydro Mobile's R&D team provided the developer of The Columbia, Neighborhood Rejuvenation Partners, LP, all the tools and expertise necessary to get the most out of Hydro Mobile's platforms. Whether used with single or twin mast setups, resting on the building's concrete base or on cantilever beams, the 20 P-series platforms each carry up to 9,750 lbs, to 500 feet up in the air. Bricks and glass are loaded on the platforms with hoists or cranes. The mobile work platforms, equipped with weather as well as overhead protection, climb up to follow the impressive construction pace of one floor every two days.

Hydro Mobile is a privately owned corporation. The company is mainly involved in the design, manufacturing and distribution of mast climbing work platforms for the construction industry. Hydro Mobile platforms are distributed throughout North America and Europe through a wide network of distributors that are recognized as key players in construction equipment sales and rental. With over 5000 platforms on the market, Hydro Mobile is unquestionably the leader of the industry.

For additional information, contact:

Thierry Lachapelle
Marketing Director
Hydro Mobile Inc.
Tel : (450) 589-8100
1-888-484-9376

www.hydro-mobile.com

Chad Baumgartner
Director Business US Development
Hydro Mobile Inc.
Tel : (262) 573-3385
(262) 644-4447



**For immediate
release...**

www.hydro-mobile.com
1-888-484-9376

Pictures of construction site attached:

Pictures must appear with the legend: “The cantilever beams set-up was not designed by Hydro Mobile.”

Project specifications:

- Location: 1160 South Michigan Avenue, Chicago
- Developer: Neighborhood Rejuvenation Partners LP
- Main contractors: Ceisel Masonry Inc. and Garth Masonry
- Design: DeStefano and Partners Ltd
- Characteristics: 49 stories, 507 feet, 541,521 square-feet of residential condos (220 units)
- Start date: October 2005
- End date: First Quarter of 2007
- Building pace: One floor every two days

Hydro Mobile P-Series specifications:

	P-series
<i>Climbing speed</i>	10' per minute
<i>Load capacity</i>	6,000 lb at 28'
<i>Single mast</i>	9,750 lb at 84'
<i>Twin mast</i>	
<i>Maximum free standing height</i>	20'
<i>Single mast min/max length</i>	12' / 28'
<i>Twin mast min/max length</i>	36' / 84'
<i>Platform weight</i>	1,180 lb
<i>Transport dimensions</i>	40' (W) x 78' (L) x 77' (H)
<i>Engine type</i>	Honda 11 HP gasoline engine

Information lookup

The Columbian: Tallest “hand set” masonry building in Chicago
 Location: Corner of Roosevelt and Michigan, Chicago
 Developer: Davis Group
 Contractors: [Ceisel Masonry Inc](#) / [Garth Masonry](#)
 Design: DeStefano and Partners Ltd
 Characteristics: 46 stories; 517 ft high; 514,000 square-foot condo (220 units)
 Starting date: October 2005
 Finishing date: 1st quarter 2007
 Budget: ?
 Building pace: 2 days per floor!



Hydro Mobile: equipment from Hydro used on site: 20 P series units (source: Steeve Widerka)

National Geographic:

Covering construction for the show Megastructures. Awaiting info from them...
 Where on site a couple of month ago when there was only cantilever beams.
 No interesting pictures. (source: Steeve Widerka)

Contacts:

- | | | |
|--------------------------|------------------|----------------------|
| - BSI (Bracing systems): | Steeve Widerka | 630 333-5609 |
| - Ceisel Masonry: | Erwin Bernhardt | 847 272-6230 |
| - National Geographic: | Matthew Royse | 202 912-6500 |
| - MCAA / Lion heart: | Jenny Farnsworth | 770-431-0867 Ext.225 |
| - Official photographer: | Jim Iska | 312 443-7251 |
-

Pictures:

- [James Photography Iska](#)
 - National geographic: Were on site a couple of month ago but no interesting pictures.
 - From MCAA (have their office 10 mn from the building)
-

Interesting articles on The Columbian:

[Associated Construction Publications](#)